

**SPECIAL
ISSUE**

Amherst Island BEACON

Newsstand
\$2.00

Issue 356

www.amherstisland.on.ca
aibeacon@sympatico.ca

November 2007



PHOTO BY JUDITH HARROWER

LYNANN WHITTON LEAD A HOST OF WONDERFUL VOLUNTEERS TO KEEP THE CENOTAPH LOOKING BETTER THAN EVER. THE CENOTAPH STANDS IN MEMORY OF THOSE FROM AMHERST ISLAND WHO FOUGHT FOR OUR FREEDOM.

THIS ISSUE

- Ian Murray, editor

Apologies to Joyce Reid for losing her WI report last month. We did print a photo that she sent but somehow lost the written work.

This month we are somewhat overwhelmed by the number of great photos submitted by Island photographers.

There were 250 copies printed for the October issue and there are still some left at the store as of November 1. So, let's try 240 copies for this issue.

SPECIAL ISSUE

-Sue Frizzell, Layout

We have been blessed with nearly 200 photos for this month's Beacon. Although I was able to convince the editor to add 4 extra pages (at a loss, as Beacon sales have been quite low over the past few months), I have still had to cut out many photos.

I have tried to include at least a few pictures of all of the major island events that have happened over the past little while, using group shots where possible to conserve space. A special thanks to all of our contributors—you have made this issue an exceptional one!! To our readers: Please enjoy this special issue.

INSIDE THIS ISSUE

Halloween Masquerade Pages 8—11
4H Fall Harvest Fest Page 19

AIMS Auction Page 18

Great Ride and Stride Pages 3, 14—17

Stone Wall Dedication Page 20-21



The Amherst Island Beacon

Issue 356
November 2007

*Published monthly,
the Beacon is
wholly funded by
paid subscriptions
and at the Amherst
Island General
Store.*

Subscription

Rates:

Canada \$30/yr
USA \$35/yr
Overseas: Contact
Us!
E-Mail \$20/yr

November Printing
240 Copies

Subscription & Editorial

A.I. Beacon
14775 Front Road
Stella, ON
K0H 2S0

Voice & Fax
(613) 389-3802
E-Mail: aibea-
con@sympatico.ca

Photo Editor:

Sue Frizzell c/o
aibea-
con@sympatico.ca

Typesetting:

Sue Frizzell c/o
aibea-
con@sympatico.ca

Deadline for all submissions:

25th of each Month

Printed By:

Burke's Printing,
Napanee

Credits:

Word 2003
Microsoft Publisher
2003
Pagemaker 7.0
Acrobat 6.0
Family Tree Maker
9.0
Microsoft Clip Art

NEIGHBOURHOOD

-Lynn Fleming

Get well to Helen Bulch this month.

Congratulations also to Helen on the birth of another great-grandson, Alexander Thomas Richard, born to her grandson Jason Bulch and his wife Lois. A new great-nephew for Ida and George.

Neilson Wemp (BC) and sister Marjorie Tooke (Burlington) spent a week on the Island visiting sisters Jean Tugwell, Helen Miller and brother Ralph Wemp (& families), following the wedding of Marjorie's granddaughter, Janet, in Burlington. Also home for the wedding and a visit was Maureen Tasker (Ralph's daughter) from P.E.I. and Shawna Phillips (Alberta).

Maurice and Shirley Filson (Saskatchewan) made a quick, surprise trip to the Island to help Harry and Barbara Filson celebrate their 60th anniversary.

Peter Large and Margaret Maloney travelled to Nova Scotia for Peter's son's wedding.

Dick and Puddy Dodds visited Prince Edward Island.

The Great Ride-n-Stride (in support of Breast Cancer care & research) was held on October 20th. It was a blustery but sunny morning as walkers, runners and bicyclists set out from the community centre on a variety of routes. Back at the Community Centre, participants enjoyed a BBQ, silent auction, draws, entertainment and lots of socializing. When all was done and said, Amherst Island's Great Ride-n-Stride brought in more than \$24,000.00 for Breast Cancer!!! Congratulations one and all!!

Although not as busy as other years, young and old alike enjoyed the annual Halloween Masquerade at the community centre.

Brooke Reid spent several days at the Royal Winter Fair in Toronto with a group of L&A 4-H members, showing one of Mike and Jill Walhout's calves.

St. Alban's ACW and church members held their annual Turkey supper a little later in the fall than usual. A large crowd enjoyed another delicious turkey dinner and fellowship.

October turned out to be a mild and sunny (although maybe too dry) month on the Island. The leaves have changed and are almost gone from the trees now. Things have slowed down, cottagers have closed up, the snowbirds are heading south and daylight savings time is done for the winter. The temperatures have become more seasonal and the "s" word has already been mentioned in the weather forecasts. It is time to settle in for the winter on Amherst Island.

BEE IN FLIGHT



PHOTO BY DAVE YOEEL

GREAT RIDE 'N STRIDE

- Sherry Miller

It started with an idea, that formed a committee, that created a fantastic community event.

On October 20, Amherst Island was host to its first Great Ride 'n' Stride. We had 131 participants who walked, jogged or cycled their way through the beautiful countryside. Everyone counts in the battle against Breast Cancer and our goal was to have participation from every household on the Island either through participating, donating or volunteering. We surpassed that goal and were able to raise \$24,037, and counting, for the KFL&A unit of the Canadian Cancer Society. These funds go to support local programs for research (Cancer Clinic of Southeastern Ontario at KGH), prevention, and the Ontario Breast Screening program.



That to us is a huge success and we want to thank our event sponsors for their support; RBC Financial Group, Invista, Empire Life, Multiideas Promotions, Advocis Kingston, Amherst Island Women's Institute, Kingston's K-Rock 105.7 and the Kingston Whig Standard. Our Community sponsors, Local Sponsors and also our media help in promotion of this event was invaluable and you all deserve a big round of email applause...

We of course also want to thank the Island community and beyond for coming together and showing that small communities can make a difference and together we will make Cancer History!



AERIAL PHOTO BY BRIAN LITTLE

WOMEN'S INSTITUTE

- Joyce Reid

The October 17 meeting was held at the home of Sharen Pickering. We opened with the Ode and Mary Stewart Collect – then recalled sentimental memories of our “First Day of School”.

It was agreed and passed that we purchase and donate to the Recreation Committee for a children's raffle, an inflatable snowman for the November 17 Parade of Lights and Community Bonfire.

The traditional Seniors' Christmas Party planned for December 9 was discussed. Entertainment for the evening will be the DOWNHOME CLOGGERS – a lively group of singers and dancers.

We were glad to be sponsors of the very successful October 20 Breast Cancer Ride & Stride event. Donations for coffee and goodies were passed on to the Cancer Society – thank you.

The biodegradable bags have been well accepted. Another 1000 have been ordered at cost through Bearance's Grocery in Kingston. A supply has been provided to the General Store in Stella. The balance are available to buy from the Women's Institute priced at \$1.00 for 20 and \$5.00 for 100.

A provincial meeting of Women's Institutes is to be held next June at St. Lawrence College over a three-day period – June 6-8. The Theme is “Going Green”. Our branch, along with several others is responsible for table and room decorations. Volunteers are needed for any time during those three days to attend as staff etc. Loot bags will be provided at this convention – we are asked to supply 30 cotton knitted or crocheted dishcloths.

The Hydro tree-cutting program – though disturbing to some – has benefited many of our gardens and trees with tons of the wood chips.

A brown bag auction was led by auctioneer Nancy Dunn – lots of surprises there!

Refreshments were served by Helen Lamb and Joyce Reid.

NEXT MEETING – November 21 is an OPEN ROSE MEETING entitled “Amnesty International, Past, Present and Future”. It will be held at St. Paul's Church Hall at 7 p.m. – ALL ARE WELCOME.

December 5 is the Annual Christmas Eve Pot Luck supper at St. Paul's at 6 p.m. Gift exchange under \$10.00.

Meeting closed with the singing of The Queen and the repeating of The Grace – adjourning shortly after 10 p.m.



AN EMBARRASSING PHONE EVENT

- John Wright

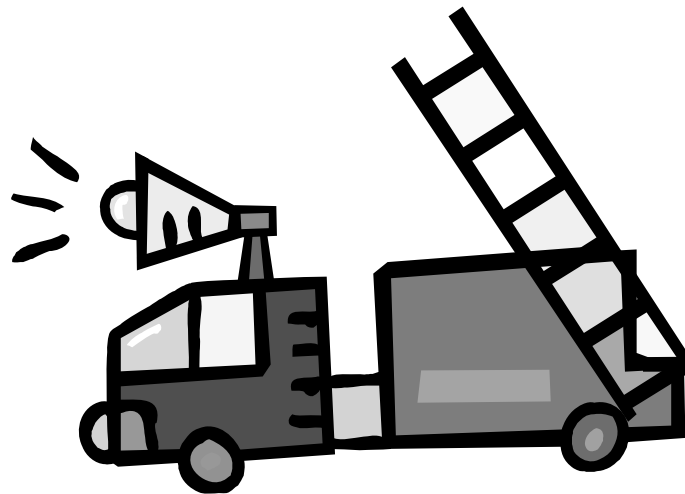
Late one evening, while rummaging through a rarely opened cabinet, I found a telephone. I keep a phone next to my computer, but the one I had been using had a background “buzz”. The one I found, although it was an older model, had buttons for adjusting the sound level. I suffer from tinni-



tus, (a ringing in the ears, which impairs hearing and cannot be simply overcome with a hearing aid), so I thought I would try the phone I found as a replacement. While holding the new phone upside down to plug in the wires, I pressed one of 11 unidentified speed-dial buttons. The receiver was off hook, and the phone gave a beep-beep-beep sound before I set it down. When I set the receiver in place, the phone immediately rang, and a female voice asked why I had called 911. I explained it was an error, but she said I must hold for the police and explain. Within seconds, a police officer came on the phone and I explained the error again.

At around 11pm, my wife and I were heading for bed when there was a loud knock on the door. A male and a female police officer had arrived to investigate the 911 call. I explained the situation again, but they said that they were required to enter the premises to make sure there was no problem. We welcomed them in and showed them the phone that caused the problem. The officers were polite and very professional in appraising the situation, which helped to ease my embarrassment somewhat.

I have disconnected the offending phone and will take it to Computer Depot on Gardiner's Road, (they advertise they will recycle electronic equipment). My purpose in reporting this is to help others avoid a similar situation. If there is no manual with it, be very careful of previously used phones!



JANET'S JOTTINGS

- Janet Scott

What a long and glorious autumn we have had! The colours, although somewhat muted without an early frost, have been spectacular. I still do not know the name of the bush that covers many abandoned fields on the Island and turns such a wonderful burgundy. That colour supplies the background for our masterpiece of brilliant red sumacs, golden birches and orange and red maples. Just a hint of deep green from pines, spruces and cedars bordered with golden brown beeches, oaks and field grasses complete the picture.

Saturday, October 27th was a great day for a walk in the Owl Woods. The rain had stopped enough that when you were out of the wind it was pleasantly warm. I was fortunate enough to guide seven ladies who work at the Markham Veterinary Clinic, including my daughter for an amble through the woods. The ever ready Chickadees met us right at the signpost and accompanied us into the woods. One of the women had been here before so brought me a gift of 30 pounds of sunflower seed. We were armed for the onslaught. Now that fall has actually come the little fellows were busy hiding the seeds so they came quite often to the hands outstretched and waiting. If you haven't fed them yet, try it. It is a delightful moment for the soul.

Further into the woods we were fortunate to find a roosting Long-eared Owl but it was nervous and flew before all the group got to see it. One White Spruce in the Barrs' Pines had at least 90 owl pellets around the base and since it had been raining so very hard we would assume they were recent ones from a great number of Long-eared Owls. Owls swallow the mouse or vole whole and then regurgitate a neat package of bones wrapped in fur and gelatin. Animals without teeth have to adapt.

The bench area in the main woods was quite active with both Downy and Hairy Woodpeckers visiting the peanut feeders and merry Nuthatches scolding us and then showing off their amazing feats of upside down feeding. The paths were covered with mixed deciduous leaves such as Red and White Oaks, Blue

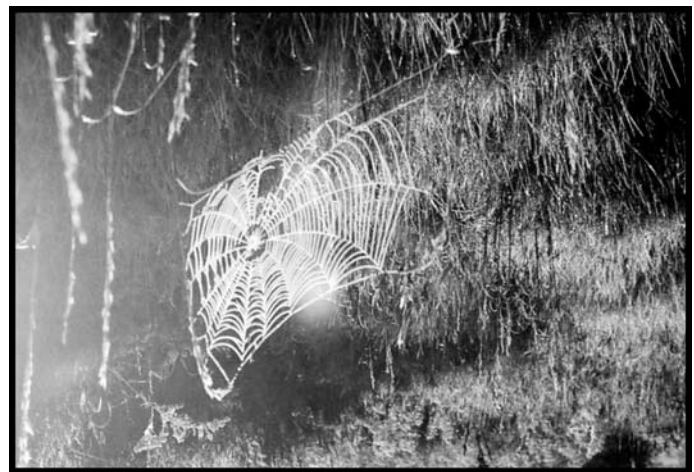
Beech and assorted maples. It was a joy to scuff through the leaves and renew our childhood memories. A serene Red-tailed Hawk drifted over the woods looking for the open pasture land in which to hunt. All in all it was quite a walk with interesting sights and sounds.

Just as we were leaving the path one person noticed a small frog on the ground. It hopped over to my boot and cuddled in. It was gray like the lichen on a stone and mottled to camouflage with its surroundings. It had sticky toes like a tree frog and was about the size of a Toonie. On our return I looked it up and we agreed that it was a Gray Treefrog which is indigenous to this part of North America. The sun had been out but as it hid behind the clouds the frog burrowed into the moss, grass and mud at my feet and we left him to sleep while we went home for hot tea and a warm house.

The recent copy of Travel, a magazine put out by Canadian Geographic has a birding article about the Owl Woods. It calls it a magical place and that's just how I feel when I stroll among fall leaves or see snow drifts like waves or delicate spring flowers or fairylike Fireflies in summer. It is a biological treasure and thank-you to the late Stuart Miller and the late Rod Barr who recognized its value and protected it for this generation. Now through the generosity of the Laurets and the Barrs many school children, adults and even we old folks get to enjoy wildlife and nature close-up and personal.

On a recent birding note, Susan Filson reported a dead Saw-whet Owl which probably hit her window so we can definitely say that Owl migration has begun. She also saw two swans so our elegant white visitors will soon be drifting in the Bay. Tundra Swans are our most common swan but now Mute Swans have nested in the Great Lakes and also Trumpeter Swans. Last year Susan spotted and identified a Trumpeter so even Swan watching can be difficult. Thanks for the update Susan.

Great Birding Everyone.



FROST LADEN SPIDER WEBS.

PHOTOS BY JUDITH HARROWER

AIMS

- Hugh Jenney

Twenty-one men sat down to a delicious breakfast provided by the 4 H (Dairy) club.

Dayle Gowan thanked Sandra & Jim Reid and congratulated Brooke for being accepted at the Royal Winter Fair to show her calf, Poplar Dell--Roy Essex.

Claire Jenney drove Sally Bowen to the meeting so that Sally could give us an update on Will's Ride for MS. Sally started by telling us all that without AIMS' generous assistance, Will would not have been able to complete his grueling ride. She told us of his adventures from sea to sea. Will's mother was diagnosed with MS ten years ago so it was his determination to raise money for MS that got him to the Pacific.

Will overcame freezing weather, soft shoulders that forced him to carry his front wheel for 14 miles, walking up Kicking Horse Pass, hurtling down the mountains with only one brake, piling up on his face, sleeping in cemeteries and on helicopter pads and meeting all sorts of strangers. Will started out being afraid to talk to strangers. Not any more. He met the most generous people along the way who took all his fear away. He took a flyer on blind faith and it worked.

Sally worked to keep him safe, fed and sheltered. She loves to travel so this trip was hers to live vicariously.

Will biked over six thousand kilometers and so far raised about that much in cash for MS. An amazing accomplishment.

Islanders are still being asked to donate. Leave a cheque payable to MS at the store. Sally will mail it to the right place and donors will receive a tax deductible receipt. This money will go to people with MS who need meals, diapers and respite care.

Dayle thanked Sally for coming with her lively and entertaining update of Will's adventure.

Auction update: It was a grand success which we will do again next year probably on Labour Day. Dayle, Paul and Hugh will write up an accounting of all the good things we do with the money for our A.I. Community.

Ride 'n' Stride: AIMS will provide the food with Brian Little acting as chief chef. Several men volunteered to help him: Ross Haines, John Harrison, Paul Lauret and Hugh Jenney. Three men have entered the walk--Ken Albertan, Zander Dunn and Doug Lamb.

The Christmas Carol will be held on Friday, December 14. Peter Trueman is the coordinator. Brian Little has offered to help. It was decided that the \$10 entrance fee be donated to Will's Ride for MS.

The New Year's Eve Dinner & Dance is on again. The band and caterer have been booked. Bruce Burnett will call a meeting soon.

We agreed to support the Halloween Masquerade as per last year's motion. It was discovered later that this money is not needed so the executive thought some of it should go to help Brooke Reid show her calf at the Royal Winter Fair.

What to do with our money? Once again it was handed back to the executive to make informed suggestions re. memoriams, scholarships, museum, school, 4-H Clubs, etc.



Brian Grace brought up the possibility of changing from using Superior Propane to the people who supply Wolfe Island, Levac. Terry Simpson is the manager and can be reached at 613-544-3335 or 1-877-544-3335. Terry tells me that so far only 12 people have responded to their flyer. They are very busy now so they will put out another flyer in the spring to see if there is enough interest. They are willing to hold a meeting on the Island if there is enough interest.

DR. DAVID LAYZELL

OCTOBER 13, 2007

OUR BIO-ECONOMY

(AIMS Speaker)

David is a Queen's University Research Chair in the Department of Biology and at the Institute for Energy & Environmental Policy. He is also the President and CEO of BIOCAP, a research foundation (www.biocap.ca).

There is a huge gap between Canada's actual greenhouse gas emissions and our Kyoto target and much of the gap is due to fossil fuel use. Canada's natural gas production is set to peak (start declining instead of increasing) in two years. The US oil production peaked in the '70's, and global oil production is expected to peak in the next 5 years. Per person, Canadians use more than 2 X as much energy as Europeans. Clearly, we need sustainable strategies to address both climate change and energy challenges.

But all is not lost. We have many arrows in our ecological quiver. We can pump CO₂ (carbon dioxide, a greenhouse gas) into the ground. Nuclear energy is available in the short term (there is not enough uranium). Cogeneration and non-bio, renewable (solar and wind turbines) energy must be some of the arrows in the quiver. Energy efficiency & conservation by both industry and individuals/cities need to account for about half of the challenge we face.

Bioeconomy Solutions will come to play a major roll in solving our energy and global warming crises, according to David. He told us that one tonne of dry biomass has the energy equivalent of three barrels of oil. Dry biomass costs only about \$75 a tonne whereas oil is up to \$90 a barrel. This biomass (typically wood and straw) compressed into energy-rich pellets can be used to replace fossil fuels for heat and power generation. It can even be used in the production of transportation fuels. It may be possible to transport some kinds of pellets through pipelines to end users. In this case, farmers and woodlot owners located along this pipeline could have a cost effective way to deliver their product to the market.

Canada is also well positioned to store CO₂ in her forests. We have 2.5 X as much forest as any other nation.

The Canadian economy is highly dependent on fossil fuel production and use. From an energy perspective, he estimates that Canada could use bioenergy to meet 40 to 100% of total energy needs, but - unlike the USA and EU - Canada has no target. A reasonable target would be for bioenergy to supply 20% of Canada's energy needs by 2030. Planting corn for ethanol is not vi-

(Continued on page 7)

COUNCIL GLEANINGS

- Ian Murray

The Township has a shiny new website. It looks attractive but I haven't used it enough to comment.

The agenda documents for the 28th Session of Council totalled 168 pages.

Council received two bids "for the supply of Drilling, Blasting, Crushing and Stockpiling services at the Amherst Island Quarry". One bid was rejected because a tender requirement was not fulfilled. The other tender in the amount of \$307,872 far exceeded the budget and it was decided to not award the contract.

The agenda documents for the 29th Session of Council amounted to 102 pages; twenty-two pages of which challenged the concept of building wind turbines on dry land.



HERE & THERE

- Ian Murray

Here are the results from the Amherst Island poll in the recent provincial election: Liberal, 137; NDP, 43; PC, 43; Green, 13; Family Coalition, 3; and, unmarked, 2. Referendum on MPP: against, 122; for, 114; and, unmarked, 5. Total ballots was 241 and about 20 Islanders voted at advanced polls.

Dorothy McGinn said it was a very good turnout. She and Beth Forester were somewhat frustrated by the number of Amherstview electors included in the list of voters.

It was a long day for Beth and Dorothy, by the time all the ballots were counted, but "the time went by quickly".

The Ontario Green Party did pretty well in the election with 8.0% of the popular vote. This is almost half of the NDP's 16.8%.

On a recent rare trip to the mainland, I listened to a CBC documentary on invasive species – focusing on a tiny marine animal that is disrupting the farmed scallop economy in PEI. Other invasive species, such as the zebra mussel, were mentioned. The environmental effects of the most destructive of all invasive species – humans – were not discussed.

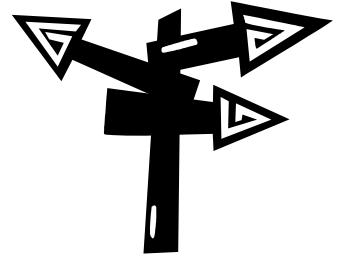


PHOTO BY DAVE YOEUELL

(Continued from page 6)

able. He called it parasitic. New agricultural crops are being developed that require few inputs and that use marginal lands. Right now, the Ontario government is subsidizing the production of one gigajoule of energy to the tune of \$7.00 for biodiesel, \$8.00 for corn ethanol, \$15 for wind power and \$104 for solar power. Farmers could make a profit by producing a gigajoule of wood or straw pellets with a subsidy of only \$4.00!! Atikokan and Nanticoke are two coal fired power generation stations in Ontario that have tested biomass co-firing. They could co-fire with biomass up to 20% without retrofitting -- and up to 100% with a major retrofit.

David had a lot more information for us, but I didn't catch it all. Please check his website at www.biocap.ca for the full story.

Dayle Gowan thanked David for coming with his laptop to let us know there is hope if we will all conserve energy and work with the planet for a sustainable bioeconomy.



PHOTO BY DAVE YOEUELL

HALLOWEEN ON AMHERST ISLAND





ALL PHOTOS BY DAVE YUELL UNLESS
OTHERWISE NOTED

HALLOWEEN MASQUERADE CONTINUED...



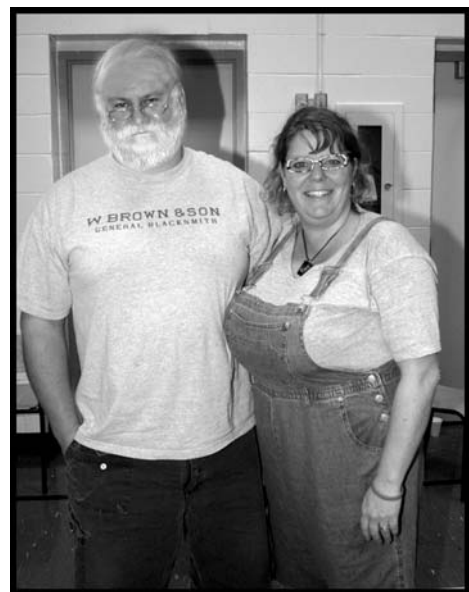


PHOTO BY BRIAN LITTLE

BLACKSMITH PAUL CUYLER AND HIS WIFE VICTORIA CAME TO THE MASQUERADE AS SASKIA AND JEFF.

EVEN THE CATS ON AMHERST ISLAND ENJOY DRESSING UP FOR HALLOWEEN.!!

HEAVEN OR HELL?

- Zander of DUNN INN

The other day I was approached by a woman - not of the Island - who asked me what heaven is like. I had to confess I did not know what heaven is like, having never been there. I figure I've been close to heaven on occasions, but I've never died and experienced the hereafter - either heaven or hell.

Some people - both people of faith and atheists - contend there is no heaven or hell. I can go half-way with them on that. I don't believe in hell after death. We people make our own hell here on earth. But I don't believe in hell beyond this life because I believe in a God of Grace who would not condemn us to an everlasting life of torment devoid of God's love. The church used to preach about God sending sinners to roast eternally over the flames of hell. In fact, the last trial for heresy in the Presbyterian Church in Canada had to do with whether God was happy or not to see those sinners suffering forever. Although the Bible does mention hell, the whole concept is foreign to what we know of God in Jesus, The Christ. And I hope nobody believes God enjoys the suffering of sinners.

I do believe in heaven - or something like it - because I believe in love, in resurrection and in new life. I cannot believe this life is all there is. I cannot believe God would waste the lives in which he has invested so much talent, energy, compassion etc. Death cannot be the end. There must be more.

The resurrection of Jesus symbolizes the more. Christians believe that as God raised up Jesus from the dead, so God will raise us up when we die. That may be "pie in the sky when you die" but many have found great comfort in that hope.

The woman with whom I was talking asked me if only Christians would go to heaven after death. I told her emphatically I believed everybody would "end up" in heaven or with God after death. Nobody, not even Hitler, Saddam Hussein or Paul Bernardo would be excluded. Why? Because God is not in the excluding business. God is in the forgiving and including business. God is greater than Christianity or our understanding of it and God's love is for the whole creation and all that is in it.

Besides, if Paul Bernardo were excluded from heaven and his parents were included, I am sure it would not be heaven for them without him. Or, if you can't identify with that, put it this way: if your beloved son got into trouble, was sent to jail and died there before he could get right with God, do you think God would reject him because he didn't make the proper decisions, say the right things, answer certain questions correctly? And if God did not allow your son into heaven, would that be heaven for you? How could it be if the best part of you - your dearest relative - were missing?

What about pets - cats and dogs etc? Will they be in heaven? Why not? God loves all creatures in this world. We humans are self-centred to think God cares only about humanity.

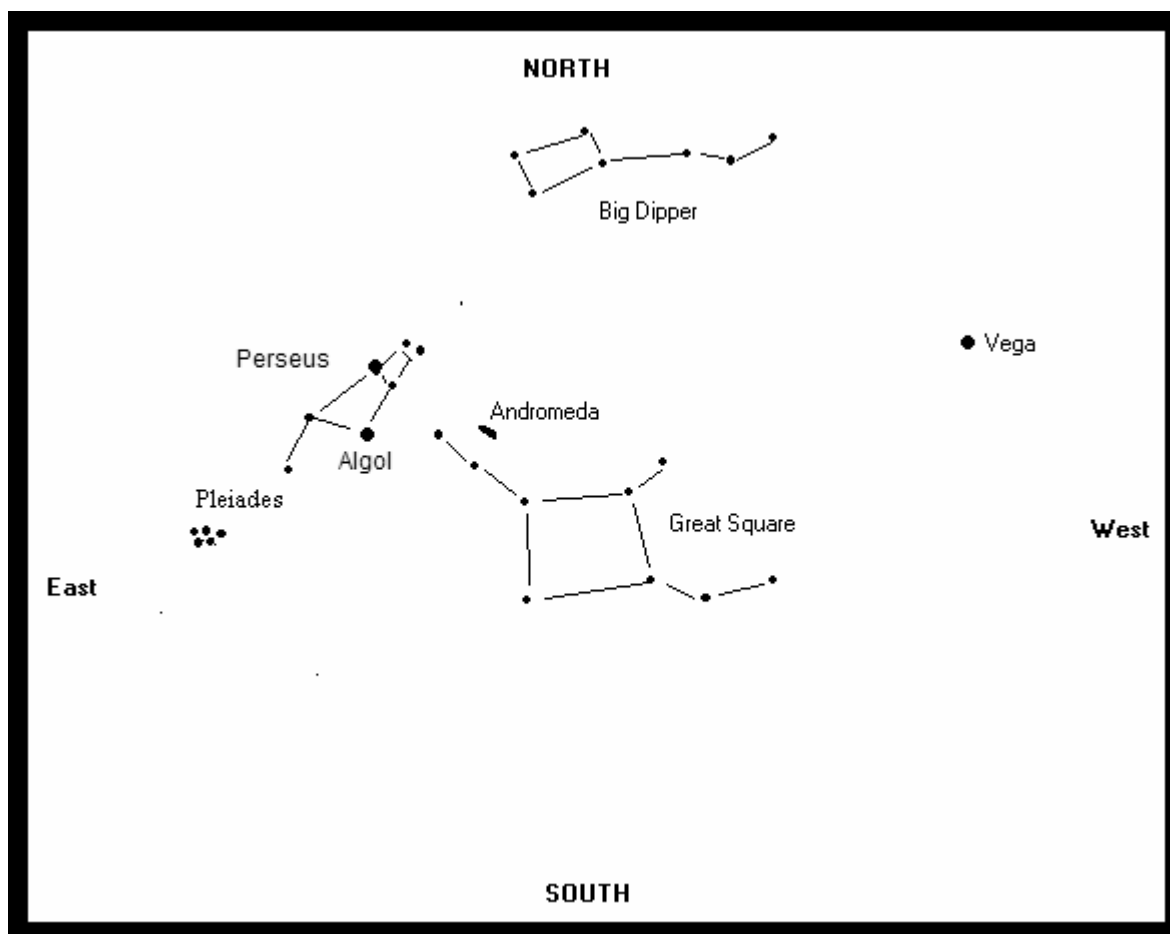
Now, if you go on to tally up all the people and animals and plants which have died, then heaven must be a big place. It is certainly far bigger than we can imagine. It is far different than we can imagine. It's not really a place at all; it's a state of being within God's love. And that's enough, more than enough, for me.

JEFF AND KAT'S WEDDING



PHOTOS BY TERRY CULLBERT

ON AUGUST 11, JEFF PEARCE MARRIED KATHERINE 'KAT' HEIKKILA AT THE HOME OF HIS MOTHER DIANE PEARCE AND MICHELE LeLAY IN THE VILLAGE OF STELLA. MS. HEIKKILA ARRIVED AT THE CEREMONY WITH HER NIECE IN GARRY FILSON'S TWO-HORSE CARRIAGE ACCOMPANIED BY ALLEN CAUGHEY. THE RIGHT REVEREND DOCTOR ZANDER DUNN OFFICIATED AT THE BEAUTIFUL GARDEN WEDDING.



NOVEMBER SKIES

- Alan Kidd

We are now deep into autumn, and the great square is now overhead during the first part of the night. Mars is beginning to be much brighter as we get nearer to its opposition in December.

The Northeast star of the great square is actually borrowed from the constellation of Andromeda. The three stars that run northeast of the square (I include the corner itself as one of the three) are the brightest stars in Andromeda. If one looks a little north of the middle of these stars, a somewhat blurry smudge of light can be seen glowing among the stars. This is the most distant object visible to the unaided eye, the great nebula in Andromeda, better known as the Andromeda galaxy. Since dark nights are essential to see the Andromeda galaxy, you'll need to wait until the latter half of November, in order to let the moon get out of the way.

The Andromeda galaxy is at least as big as our own and contains hundreds of billions of stars. It appears dim because it is two and a half million light years away. This distance seems almost unimaginably great. Especially when you consider light takes only eight minutes to cross the 150 million kilometers that separate us from the sun. However, the Andromeda galaxy is our next door neighbor in terms of intergalactic distances. The most distant galaxies that have been observed are some eight billion light years away.

At dawn in early November, the 4th through the 7th to be exact, there is a nice grouping in the sky. The Moon will drift by Mer-



cury, Venus and Saturn during this period. Mercury is making one of its somewhat rare appearances in the sky, and will rise an hour and a half before the sun on November 8th, when it reaches its greatest western elongation.

Jupiter is now low in the southwest at dusk. By the end of the month it will disappear from the evening sky.

Saturn is located near Regulus in the constellation of Leo. By the middle of the month it rises about midnight and is an impressive sight in a small telescope.

Mars is now a very bright object rising a few hours after the moon. It is located in Gemini, near Castor and Pollux. On the evening of November 26th the Moon will be only about 1 degree from Mars.

The Leonid meteor shower peaks on the morning on November 18th. The moon is not a factor and about a dozen meteors an hour should be visible under dark skies.

On the chart I've added Gemini, as well as the positions of the Andromeda Galaxy and Saturn.

A small comet has suddenly become much brighter and can now be seen with the naked eye, if you get up about an hour before dawn. Comet Holmes is located in the constellation Perseus (high in the Northwest), about midway between Cassiopeia and the Pleiades. The easiest way to find it is to go on the website Heavensabove.com and look at the finder chart there. Or you can extend a line from the middle two stars of Cassiopeia northwards about four times the distance between the two stars. The comet appears to be a dim fuzzy spot, but is a good sight in binoculars.

RIDE AND STRIDE

ALL PHOTOS BY TERRY CULBERT UNLESS OTHERWISE NOTED



TOP LEFT: OPENING CEREMONY IN THE COMMUNITY CENTRE. TOP RIGHT: CANCER OFFICIAL CHERYL BIRD AT THE MICROPHONE WITH JANET GRACE. MIDDLE LEFT: THE ROYAL BANK IN BATH PRESENTS A CHEQUE FOR \$1000. BOTTOM: ISLAND PHOTOGRAPHER BRIAN LITTLE STANDS ON A LADDER TO TAKE AN AERIAL CROWN SHOT OF ALL THE PARTICIPANTS.





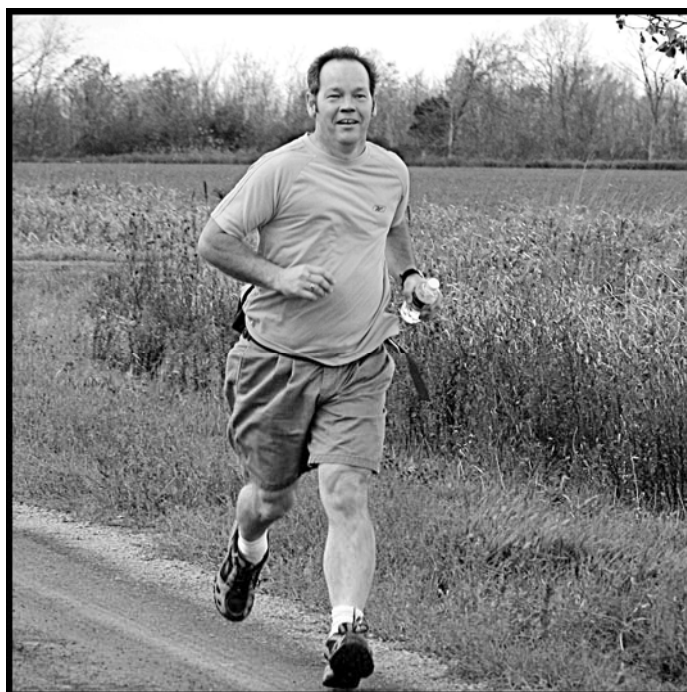
CYCLISTS MAKE THEIR WAY ALONG THE STELLA FORTY FOOT ROAD.



BETTY WEMP AND HER GRANDSON JACOB.

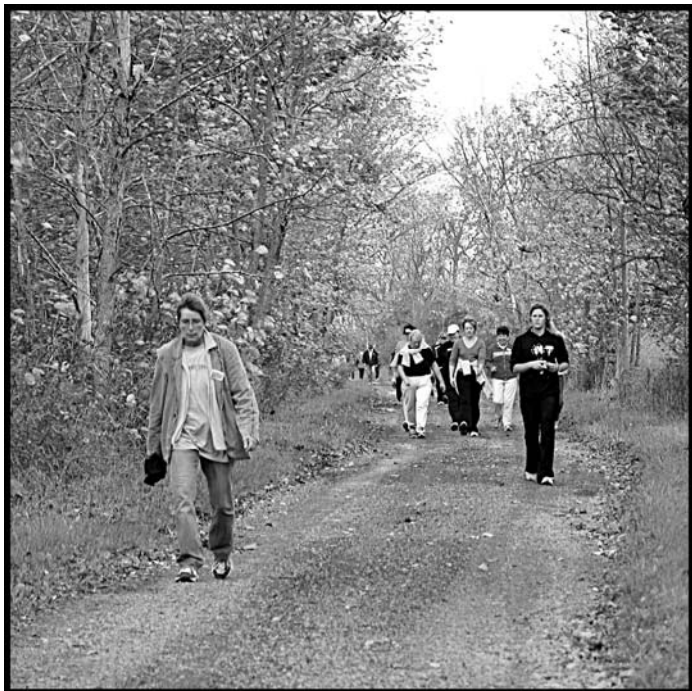


JOGGERS ON THE SECOND CONCESSION ROAD. THIS YOUNG MAN WAS 1ST TO FINISH.

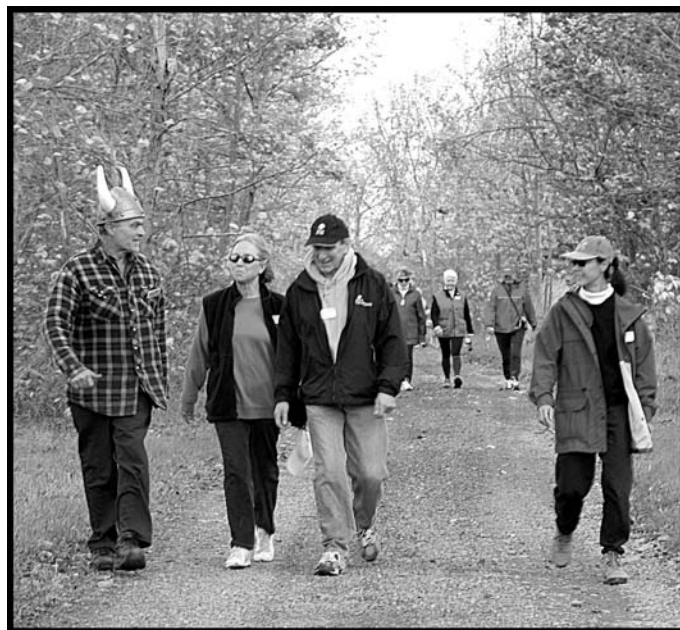


'MILLHAVEN LEONARD' RAISED OVER \$600 IN PLEDGES.

THE GREAT RIDE AND STRIDE CONTINUES...



BARB LAING LEADS THE PACK ALONG THE DUMP ROAD.



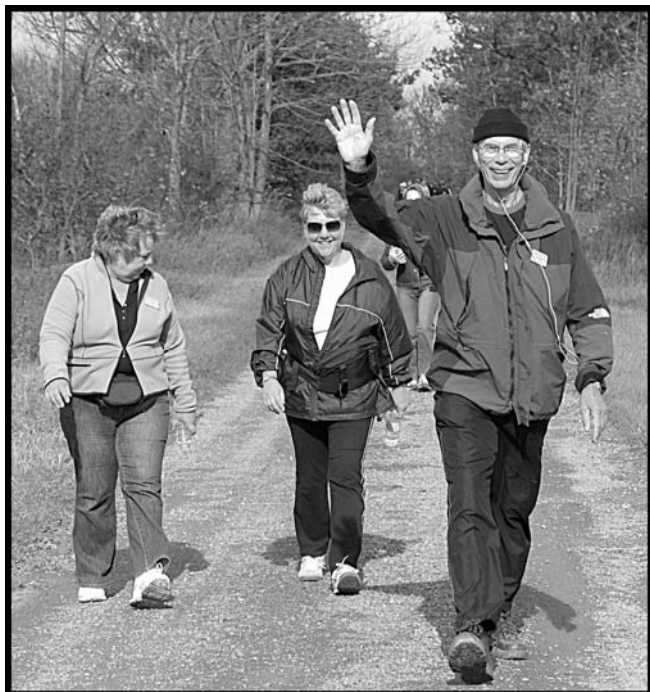
GEORGE 'THE VIKING' GAVLAS, SUSAN AND ERIC FRIESEN AND CHARLOTTE SHENG AT THE HALFWAY MARK.



ROSY FINDLAY, ELEANOR TRUEMAN, DIANE PEARCE, AND BARB HOGENAUER ALONG THE DUMP ROAD.



PETER LARGE TAKES A SHORT BREAK.



PETER TRUEMAN CLOSSES IN ON THE SECOND CONCESSION ROAD.



TOM SYLVESTER IN HIS FANCY WALKING ATTIRE.

92.1 CJA1 FREQUENCY TEST



AN INDUSTRY CANADA ENGINEER ADJUSTS EQUIPMENT, STANDING IN FRONT OF CANADA'S SMALLEST RADIO STATION, TESTING FOR AERONAUTICAL INTERFERENCE. INSIDE THE MILKHOUSE STUDIOS OF AMHERST ISLAND PUBLIC RADIO, CEO TOM RICHMOND TWEAKS THE TRANSMITTER RACK AND LATER THAT DAY, CJA1 MOVED FROM 93.7 TO 92.1 ON THE DIAL.

PHOTOS BY TERRY CULBERT

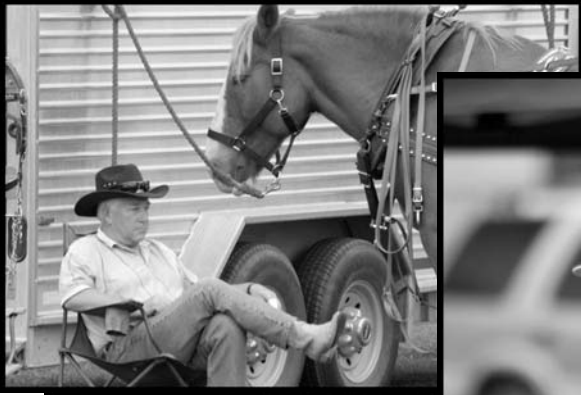
AIMS END OF SEASON AUCTION

SOLD!

PHOTOS BY BRIAN LITTLE



4H FALL HARVEST FEST



PHOTOS BY BRIAN LITTLE

STONE WALL DEDICATION CEREMONY AT WINDCHIME HOUSE

PHOTOS BY BRIAN LITTLE UNLESS OTHERWISE NOTED

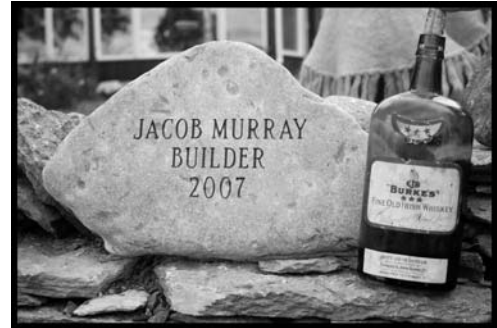


PHOTO BY TERRY CULBERT



PHOTO BY TERRY CULBERT

ABOVE LEFT: PEGGIE COULTER AND HUSBAND STANLEY BURKE HAD THEIR IRISH DRY STONE WALL BUILT BY JACOB MURRAY IN THE HISTORIC TRADITION OF THE 1800'S. ABOVE RIGHT: BECKY WIEDMAN, MARTY JONES (ASSISTANT WALL BUILDER) AND KYLE MURRAY BELOW LEFT AND MIDDLE: THE RIGHT REVEREND DOCTOR ZANDER DUNN BLESSES THE FINE-LOOKING IRISH WALL AS HE POURS A WEE DRAM OF VINTAGE IRISH WHISKY ON ONE OF THE STONES. BELOW RIGHT: TERRY CULBERT AND ISLAND ELDER HELEN CAUGHEY.



PHOTO BY TERRY CULBERT





ABOVE LEFT: AMHERST ISLAND ELDER HELEN CAUGHEY AND JACOB MURRAY PREPARE THEIR SCISSORS FOR THE RIBBON CUTTING. ABOVE RIGHT: PEGGIE COULTER AND HER HUSBAND STANLEY BURKE SPEAK WITH HELEN CAUGHEY PRIOR TO THE WALL DEDICATION ON SUNDAY, OCTOBER 14TH. RIGHT: IAN MURRAY AND GRANDSON NATHAN, WATCH CELTIC PERFORMERS, FIDDLER SO-LANGE LACROIX AND DANCER KALISTA CLEMENT.

ALL PHOTOS ON THIS PAGE BY TERRY CULBERT

ART SHOW AT THE LODGE

THE LODGE ON AMHERST ISLAND'S LAST SHOW OF THE SEASON CONSISTED OF PAINTINGS AND PHOTOGRAPHS SUBMITTED BY ISLAND ARTISTS. THE SHOW, TITLED 'AUTUMN', OPENED ON OCTOBER 6TH, AND WAS A GREAT SUCCESS.



PHOTOGRAPHER BRIAN LITTLE IN FRONT OF ONE OF HIS PHOTOGRAPHS.



SOME OF THE ISLAND ARTISTS INVOLVED WERE LEFT TO RIGHT, JUDI GOULD, JOAN MARTIN, ROSY FINDLAY, BARB HOGENAUER, AND CAROLINE ACKERMAN.

PHOTOS BY TERRY CULBERT



LENNOX AND ADDINGTON S.P.C.A. UPDATE

The past months have been VERY stressful for the L&A OSPCA, and I am sure the coverage in the Beaver regarding the near closure of our shelter, the subsequent change due to the overwhelming support from the public and the sharing of the Municipal Shelter are now well known. Right now the staff are working extra hard to maintain two locations and I would like to let you know of a couple of beneficial changes.

All animals first go to the Municipal location for all of the necessary needles, etc. before they are transferred to the shelter (which is now basically an adoption and boarding centre). Also, stray dogs picked up were previously only kept for a few days for owners to claim them, now when their "time is up" they are transferred to the SPCA shelter, cared for and put up for adoption. The above changes are good but they do take much more time and money to maintain. One source of income lost is the "Cat's MEOW" Thrift Shop so, as noted in my new monthly requests, I can no longer collect clothing, books, etc, which were previously sold at the store. We are trying to find a new location, but so far, all rent prices have been too high. But I will be asking for donations again as soon as a new store is found. A lot of the food is now being donated by Nutram, except for cans of kitten food, used stamps of any kind, Canadian Tire Money, used towels and knitted squares. Material placemats, paper towels, dish and laundry detergents, garbage bags, and kitty litter (the cheap kind).

If, when you shop you can find it in your heart to add something from the above list to donate and leave in my porch it will be gratefully used to help the staff keep the animals clean and comfortable.

A BIG problem especially for the dogs is boredom. Cats and kittens will play together or with the cat toys provided but dogs really need things to help them pass the time. Desperately needed are suitable things for them to play with so I am appealing for new or gently used "KONGS", sturdy large rubber toys and extra large dog bones. With the Christmas season fast approaching, maybe you could buy them a gift to put under their

tree.

Please, if you are thinking of adding a pet to your family, go to the shelter first, and give a second chance to one of the lovely animals that are pleading for a new home.

Thank you for all the support I have received through your donations. From myself, and the animals that you have helped, A VERY HAPPY CHRISTMAS AND A PEACEFUL NEW YEAR!

Thanks again,
Freda Youell

Harry and I have been lucky to celebrate our 60th wedding anniversary.

Thanks to our family who worked so hard to put things together for us.

We were showered with many beautiful gifts, flowers and cards, and most of all having our friends, neighbours, and relatives to be here with us, and wish us the best on a special event.

It was also made special that Harry's cousins, Maurice and Shirley Filson from Regina, and Hugh and Kathy Filson from London made a special trip to be here with us. Also Doris and Joe Crackel from Florida stayed over before heading back home. Harry was born in a log house on the South Shore 81 years ago – it's since been torn down – and things over the years haven't changed in many ways. We are still one big happy and giving family.

Thanks again to one and all and God bless.

Harry and Barb Filson

I would like to thank all those who helped make the 4H Harvest Fest such a great day. A special thanks to the Reid family for hosting this Island event.

Keith Miller

NOTICE TO RESIDENTS OF LOYALIST TOWNSHIP

AT A GENERAL COUNCIL MEETING ON AUGUST 27, 2007 LOYALIST TOWNSHIP REVISED IT'S OPEN AIR BURN BY-LAW. THE BY-LAW STATES THAT THE USE OF BURN BARRELS IS STRICTLY PROHIBITED IN THE MUNICIPALITY. FIRE CHIEF WAYNE CALVER STATED THAT IN RECENT INFORMATION OBTAINED FROM ENVIRONMENT CANADA, THE USE OF BURN BARRELS IS ONE OF THE LARGEST SOURCES OF AIR POLLUTION ACROSS THE COUNTRY. THE USE OF BURN BARRELS RELEASE SUCH POLLUTANTS INTO THE AIR SUCH AS DIOXINS, ARSENIC, LEAD AND BENZENE.

THE BY-LAW ALSO INCLUDES THAT ANY PERSON WHO CONDUCTS OPEN AIR BURNING THAT RESULTS IN THE FIRE DEPARTMENT BEING DISPATCHED TO EXTINGUISH THE FIRE THAT IS DEEMED TO BE OUT OF CONTROL WILL BE LIABLE FOR THE COST ASSOCIATED WITH THAT CALL. CHIEF CALVER ADVISES RESIDENCE TO VIEW THE BY-LAW ON OUR WEB SITE WWW.LOYALISTFIRE.CA OR PICK UP A COPY AT THE ADMINISTRATION OFFICE AT 51 MAIN ST. IN ODESSA. MORE INFORMATION ON OPEN AIR BURNING CAN BE OBTAINED BY CALLING 613-386-3762 DURING BUSINESS HOURS.

**PRESS RELEASE:**

LOYALIST TOWNSHIP IS PLEASED TO ANNOUNCE THE RELEASE OF A REDESIGNED WEB SITE.

WWW.LOYALIST.CA

THE GOAL OF THE NEW SITE IS TO ALLOW THE PUBLIC EASY ACCESS TO A WIDE VARIETY OF USEFUL INFORMATION AS WELL AS TO INTRODUCE MORE ECONOMIC AND TOURISM ASPECTS TO THE SITE. THE WEB SITE WAS ALSO DESIGNED WITH NEW AND LONG-TIME RESIDENTS IN MIND, AS WELL AS USERS WITH DIAL-UP AND HIGH-SPEED INTERNET SERVICE.

WHETHER YOU LIVE, WORK, OR PLAY IN LOYALIST TOWNSHIP, YOU WILL FIND ALL THE INFORMATION YOU REQUIRE RIGHT AT YOUR FINGERTIPS. THE NEW TOURISM SECTION HAS OPENED A WHOLE NEW WORLD TO VISITORS AND RESIDENTS ALIKE.

THIS NEW SITE MAKES FINDING INFORMATION ON BUILDING PERMITS, PROPERTY TAXES, ROADWAYS, RECREATION AND OTHER SERVICES EASIER AND QUICKER THAN EVER BEFORE.

TRY CLICKING ON THE CALENDAR. USERS CAN FIND OUT WHEN THE NEXT COUNCIL MEETING IS HELD, THE DATES OF UPCOMING EVENTS FOR KIDS, LIKE THE ANNUAL "SPOOKTACULAR" FEST, WHAT TIME THE NEXT YOUTH DANCE STARTS, PLUS MUCH, MUCH MORE. COMMUNITY GROUPS ARE INVITED TO SEND THEIR EVENTS TO WEBMASTER@LOYALIST.CA TO BE INCLUDED ON THE CALENDAR.

REEVE CLAYTON McEWEN SAYS OF THE LAUNCH OF THE SITE - "THIS WILL OPEN A NEW LINE OF COMMUNICATION FOR THE RESIDENTS OF LOYALIST TOWNSHIP WITH LOYALIST COUNCIL AND STAFF. SURFING OUR NEW SITE WILL MAKE US MORE ACCESSIBLE TO ALL OF OUR CITIZENS."

"ECONOMIC DEVELOPMENT IS A PRIORITY FOR LOYALIST TOWNSHIP AND THE COUNTY OF LENNOX AND ADDINGTON; WE HAVE WORKED EXTREMELY HARD TO ESTABLISH A PROACTIVE BUSINESS ENVIRONMENT. THE NEW LOYALIST TOWNSHIP WEBSITE PROVIDES A GREAT TOOL FOR OUR BUSINESSES AND POTENTIAL INVESTORS. IT DEMONSTRATES THAT LOYALIST TOWNSHIP IS OPEN FOR BUSINESS" - STEPHEN PAUL, MANAGER, ECONOMIC DEVELOPMENT LENNOX AND ADDINGTON COUNTY.

CHIEF ADMINISTRATIVE OFFICER, DIANE PEARCE COMMENTED, "PLEASE TRY THE REDESIGNED WEBSITE, THEN TELL YOUR FRIENDS ABOUT IT. ALSO, PLEASE TELL US WHAT YOU THINK AND GIVE US SUGGESTIONS FOR IMPROVEMENTS. WE HOPE THAT THIS SITE WILL BECOME YOUR FAVOURITE WAY TO FIND OUT WHAT'S HAPPENING IN LOYALIST - YOUR TOWNSHIP."

PLEASE CONTACT MAUREEN SHARPE AT MSHARPE@LOYALIST.CA FOR FURTHER INFORMATION.

EUCHRE IS BACK

STARTED FRIDAY SEPT 7 AT 7:30 P.M.

WE HAVE NO PROFESSIONAL PLAYERS SO IF YOU KNOW HOW TO PLAY EUCHRE COME OUT FOR AN EVENING OF FUN AND FELLOWSHIP. LIGHT REFRESHMENTS AND COFFEE ALL EVENING.

GOOD PRIZES AT END OF SERIES

THERE WILL BE A SHARE THE WEALTH DRAW AFTER 6 GAMES.

SPONSORED BY THE ACW

ADMISSION IS \$3.00

NO EUCHRE NOV. 16.

HYDRO MULCH



PHOTOS BY TERRY CULBERT

OVER THE PAST MONTHS, HYDRO ONE CREWS HAVE BEEN TRIMMING AND MULCHING TREE BRANCHES ALL ACROSS AMHERST ISLAND.

NOTICES



AIMS ANNUAL PRESENTATION OF A CHRISTMAS CAROL WILL BE HELD ON FRIDAY DEC 14, AT ST..PAULS. 7:15PM . TICKETS ARE AVAILABLE THROUGH ANY AIMS MEMBER. FEATURED PERFORMERS INCLUDE: INKA BROCKHUASEN, AND A SELECTION OF OTHER MUSICIANS. READERS INCLUDE: VICKI KEITH, DEBORAH KIMMETT, JOHN SCHRAM, ERIC FRIESEN, AND ERIC WELBANKS.

NOTICES

CAROLINE YULL LEGAL SERVICES

I HAVE TEMPORARILY MOVED MY PRACTICE TO MY HOME OFFICE. I HAVE SET MY VOICEMAIL UP WITH SEPARATE MAILBOXES FOR PERSONAL AND PROFESSIONAL MESSAGES, SO FOLLOW THE PROMPTS TO KEEP YOUR BUSINESS MESSAGE UNAVAILABLE TO ANYONE BUT ME. LOOK FOR MY NEW OFFICE IN AMHERSTVIEW AT 18 MANITOU CRESCENT WEST (IN THE CORNER NEAR THE LIQUOR STORE) AFTER THE END OF JULY. I'LL ANOUNCE NEW PHONE NUMBERS THEN. I AM STILL HAPPY TO MEET WITH YOU AT YOUR HOME, IF THAT IS MORE CONVENIENT FOR YOU. NEW OFFICE CONTACT INFO:

UPS

NOW DELIVERING AND PICKING UP ON THE ISLAND. CONTACT SUPERVISOR, SEAN LE AT (613) 549-7872.

NOTICES

NEWS FROM THE GENERAL STORE

THE *WHIG STANDARD* IS NOW AVAILABLE MONDAY THRU SATURDAY AT THE STORE.

WE NOW HAVE **ICE CREAM PIES** AVAILABLE. CHOCOLATE PEANUT BUTTER MMM—\$13.00, AS WELL AS THE SAME GREAT BAKE 'N' SERVE PIES. WE NOW CLOSE AT 5PM ON FRIDAYS.

FLU SHOTS

THE AMHERST ISLAND EMERGENCY SERVICES ASSOCIATION IS PARTNERING ONCE AGAIN WITH KFL&A PUBLIC HEALTH TO PROVIDE A FREE FLU SHOT CLINIC ON AMHERST ISLAND.

THIS YEAR'S FREE CLINIC WILL BE HELD AT THE AMHERST ISLAND COMMUNITY CENTRE BETWEEN 3:15 AND 5:30 P.M. ON NOVEMBER 24TH.

FOR MORE INFORMATION, PLEASE CONTACT KFL&A PUBLIC HEALTH FLU INFO LINE AT 613-549-1232.

NATURSAC

THE AMHERST ISLAND WOMEN'S INSTITUTE PROMOTES THE NATURSAC WHAT? THE NATURSAC, A NEW-GENERATION BIODEGRADABLE PLASTIC BAG, IS NOW AVAILABLE ON THE ISLAND. THEY ARE MADE PRIMARILY FROM CORNSTARCH AND FULLY BIODEGRADABLE POLYMERS OR POLYLACTIC ACID. THEY CAN CARRY 22 POUNDS OF CONTENTS. THEY HAVE A SHELF LIFE OF TWO YEARS WHEN STORED AT NORMAL ROOM TEMPERATURE.

WHY? NATURSAC BAGS ARE 100% BIODEGRADABLE-COMPOSTABLE, AND CAN BE RE-USED AND RECYCLED MANY TIMES. THEY REDUCE LANDFILL MASS, ALLOW CONTENTS TO DISINTEGRATE, AND IF BLOWN ABOUT IN THE WIND, WILL BIODEGRADE, UNLIKE REGULAR PLASTIC BAGS THAT REMAIN CAUGHT ON BRANCHES OR FLOAT IN WATER FOR YEARS, AN UNSIGHTLY MESS AND POTENTIALLY LETHAL TO ANIMALS. THEY TAKE LESS ENERGY AND WATER TO PRODUCE THAN PAPER BAGS, AND ARE MORE DURABLE THAN PAPER BAGS IN WET WEATHER. THEY LEAVE NO TOXIC OR POLY RESIDUES IN THE SOIL, AND THE RESULTING COMPOST WILL BE ABLE TO SUPPORT PLANT GROWTH.

WHERE? USED BY THE WEASEL AND EASEL, THE AMHERST ISLAND GENERAL STORE. HOW MUCH. 20/\$1.00, 100/\$5.00 CALL 613-389-1320

FOR SALE

FOR A DONATION

VARIOUS ITEMS AVAILABLE WITH DONATION TO MS FOR WILL'S RIDE.


THEY INCLUDE: 4 SLAB DOORS, 6 BI-FOLD DOORS & 2 EXTERIOR DOORS (ALL WITH HARDWARE); ASSORTED WINDOW COVERINGS, ETC.; COMPLETE KNOTTY PINE KITCHEN CABINETS APPROX. 12 LINEAR FEET WITH HARDWARE.

FOR SALE

DOUBLE STAINLESS STEEL SINK AND FAUCET.

GE DISHWASHER WITH BUTCHER BLOCK TOP.

CONTACT ANN AT 613-634-8946 (AFTER OCTOBER 29TH).



CAROLINE YULL LL.B.
LEGAL SERVICES

PHONE: 613-634-9986
FAX: 613-384-5311
EMAIL: CYULL@KOS.NET

18 MANITOU CR. W.
AMHERSTVIEW, ON
K7N 1S3

(BESIDE PAPA'S PIZZERIA)

~ CLASSIFIEDS ~

FOR SALE

"ONCE UPON AN ISLAND"

IS A NOVEL BASED ON THE HISTORY OF MY GREAT-GREAT-GRANDFATHER AND HIS WIFE AND THEIR RELATIONS ON AND ABOUT AMHERST ISLAND.

\$20 – WILL REPRINT IF SUFFICIENT ORDERS RECEIVED.

DORIS HENDERSON – (613) 389-1872.

MAGIC CANDLES FOR SALE.

THEY CHANGE COLOURS AS THEY BURN. \$12, \$15 AND \$18 EACH.

GREAT FUNDRAISERS OR HOSTESS GIFTS OR ROMANTIC INCENTIVES.

CALL BERNICE OR NEIL, 613 389-5389

1 SOLID PINE SOFA WITH GREEN COVER. GREAT CONDITION

\$200

GORD & LYNN 613-384-4519

A **FLIP SOFA**, NEVER USED, 613-389-1540

1992 BUICK LESABRE

BURGUNDY, 4 DOOR

- EXCELLENT CONDITION – LOCAL CAR – 172,000KM

BLAUPUNKT HIGH POWER FM/AM/CD \$3500

PASSED EI AND SSC LAST YEAR.

WILL RETEST ON SALE.

613-384-7925

PETER LARGE & MARGARET MALONEY

LOT FOR SALE ON AMHERST ISLAND

WATER VIEW AND WATER ACCESS
APPROVED FOR BUILDING AND SEPTIC
WELL AND DRIVEWAY INSTALLED
CALL: 613 389 4143

THE **LIBRARY** HOURS ARE CHANGING IN MARCH 2007 FOR THE STELLA LIBRARY. NO WEDNESDAY.

TUESDAY EVENING 6:00 P.M TO 9:00 P.M
FRIDAY 11:00 A.M. TO 2:00 P.M.

AMHERST ISLAND DIRECTORY

THE WOMEN'S INSTITUTE HAS PUBLISHED THE NEW PHONE BOOK.

COPIES OF THE DIRECTORY CAN BE PURCHASED AT THE AMHERST ISLAND GENERAL STORE. \$10.00 EACH. THE PROCEEDS SUPPORT NUMEROUS COMMUNITY ACTIVITIES.

FOR SALE

AMHERST ISLAND T-SHIRTS AND SWEATSHIRTS

AVAILABLE FOR SALE FROM BETH FORESTER 613-389-5582 OR LINDA WELBANKS 613-389-4143

PICNIC TABLES & WEATHER VANES

KEITH MILLER, 389-2588

RAWLEIGH.

TO PLACE YOUR ORDER CALL MARIE WARD AT 613-389-5767 OR E-MAIL BMWARD@KOS.NET

BLACKSMITH CREATIONS

FOR BEAUTIFUL HAND-CRAFTED WROUGHT IRON GATES, FENCES, HANDRAILS, FIRE PITS, GARDEN ARCHES AND MANY OTHER ITEMS FOR YOUR HOME AND GARDEN, VISIT PAUL AND VICTORIA CUYLER'S WEBSITE AT WWW.PRCIRONWORKS.CA CUSTOM WORK ALSO DONE TO ORDER.

PAUL CUYLER (BLACKSMITH) AND VICTORIA CUYLER (METALWORKER) ARE THE ARTISANS HELPING TO BRING THE STELLA BLACKSMITH SHOP BACK TO LIFE. THEY HAVE A SMALL BLACKSMITH/METAL CUTTING OPERATION IN NEWTONVILLE (NEAR PORT HOPE).

8"x10" PHOTOGRAPHS

BY DON TUBB: SHEEP AND THEIR GUARDIAN DOGS AND OTHER ISLAND SUBJECTS. UNFRAMED, \$40; FRAMED, INDIVIDUALLY PRICED. FOR VIEWING, PLEASE VISIT TOPSY FARMS WOOL SHED OR VIEW PICTURES IN GALLERY AT WWW.TOPSYFARMS.COM. PLEASE CALL FOR APPOINTMENT OR TO PLACE ORDERS. (613) 389-3444

LANDFILL SITE HOURS

WED 11-2; SAT 10-NOON; SUN 2-4.

FERRY OFFICE HOURS

MON, WED, FRI: 9-NOON & 1-4

FERRY FUEL-UP DAYS ARE TUESDAY AND FRIDAY (BE PREPARED FOR A DELAY).

LIBRARY HOURS

TUESDAY 7-9PM, WED 10-NOON, FRIDAY 1-3PM.

WANTED

SPCA

BECAUSE OF THE CHANGES AT THE L&A SPCA, MY APPEAL LIST IS NOW AS FOLLOWS:

CHEAP KITTY LITTER

CANS OF KITTEN FOOD, USED STAMPS, CANADIAN TIRE MONEY, KNITTED SQUARES AND MATERIAL PLACE MATS. PAPER TOWELS, GARBAGE BAGS, DISH AND LAUNDRY SOAP, USED TOWELS, CAT TOYS, RUBBER KONGS, AND LARGE RUBBER TOYS FOR DOGS AS WELL AS TREATS FOR BOTH DOGS AND CATS.

DONATIONS CAN BE LEFT IN MY PORCH OR YOU CAN CALL FOR A PICK UP. ISLANDERS HAVE ALWAYS BEEN VERY SUPPORTIVE IN HELPING OUR LOCAL SHELTER AND THE ANIMALS LIVES ARE BETTER BECAUSE OF YOU. THANK YOU ON THEIR BEHALF.

FREDA YOEUELL 613-384-4135

TO PURCHASE

A SECOND HAND POLUG IN PHONE IN GOOD CONDITION. (SALLY CAN'T USE NEW STUFF)

613-389-3444

FOR RENT

HOUSE FOR RENT:

YEAR-ROUND, BY THE WEEK, WEEKEND OR MONTH ON THE NORTH SHORE.

CALL CHERRY 613-634-1212

COTTAGE

THREE BEDROOM COTTAGE FOR RENT ON NORTH SHORE, SLEEPS TEN. PADDLE BOAT, CANOE, BIKES AND SWIMMING RAFT. REASONABLE RATES. CONTACT CAROLYN (905) 729-3259 OR CGREEN@LOOK.CA

SAND BAY BED & BREAKFAST

PRIVATE WATERFRONT, LAST HOUSE ON THE NORTH-EAST SHORE OF AMHERST ISLAND WITH SPECTACULAR VIEW. BELGIAN HORSE-DRAWN CARRIAGE OR WAGON RIDES ALSO AVAILABLE. CONTACT SUSAN & GARRY FILSON 2 FRONT ROAD, STELLA. PHONE: 613-384-7866.

SOUTH SHORE COTTAGE

ON PRIVATE, SECLUDED PENINSULA. OVER 2000FT OF LIMESTONE SHORELINE. CALL (613) 389-5536 FOR FURTHER INFORMATION.

~ CLASSIFIEDS ~

FOR RENT

NORTH SHORE COTTAGE

PRIVATE WITH GOOD SWIMMING. BY THE WEEK OR WEEK-END, MAY-OCTOBER. CALL CHERRY 613-634-1212

STORAGE

SEASONAL STORAGE IN STELLA! - BOATS, CARS, SNOWMOBILES, ETC. INDOORS, REASONABLE RATES. DAYLE GOWAN 613-634-3815

THE LODGE ON AMHERST ISLAND

LODGING ROOMS AND RENTAL AVAILABLE FOR SPECIAL OCCASIONS. CALL: (866) 552-3535

WWW.AMHERSTISLAND.ON.CA/THELODGE ALSO, 1 & 2 BEDROOM COTTAGES ON STELLA POINT. BY THE WEEK OR WEEKEND, APRIL - OCTOBER. (PHONE NUMBERS ABOVE).



SERVICES/BUSINESS ADS



PAMPERED CHEF.
SO YOU LIKE TO COOK? I HAVE THE RIGHT TOOL FOR YOU. BARB MILLER. 613-384-8548.



SERVICES/BUSINESS ADS



Little Red Hen
At Your Service

Saskia Wagemans

Let me help you with:

- Your House
- Your Yard
- Your Pets
- Your Parties
- Your Food
- Your Move

613 384 7183

613 483 7518

wagemans_s@yahoo.ca

http://lrhservices.com

SERVICES/BUSINESS ADS

LAKESHORE RUBBER STAMP

I CAN PROVIDE BUSINESS AND ART STAMPS, DATERS, SIGNATURE AND SIMILAR PRODUCTS. ALL STAMPS ARE CUSTOM MADE ON THE PREMISES AND CAN BE READY IN 24 HOURS. PLEASE CALL 613-389-8441 OR FAX 613-389-9770 EMAIL:

SELC.WELBANKS@SYMPATICO.CA

THIS IS A HOME-BASED BUSINESS AND AVAILABLE MOST DAYS.

CANADA POST HOURS OF OPERATION:

MON-FRI: 9AM - 11:30AM; 2:30PM- 5PM.
SAT. 9AM-NOON.

CERTIFIED COMPUTER TECHNICIAN

WITH 12 YEARS EXPERIENCE. HARDWARE INSTALLS/REPAIRS/UPGRADES. NETWORKING AND INTERNET SETUP INCLUDING WIRELESS. TUTORING. VIRUS AND SPYWARE REMOVAL AND ASSISTANCE ON PREVENTION.

\$ 65.00 FOR THE FIRST HOUR AND \$40.00 FOR SUBSEQUENT HOURS. COLLEEN:

OFFICE AND MSGS: 613-634-6334

CELL: 613-539-1900

COLLEEN@LAHAISE.NET

WWW.LAHAISE.NET

PERSONAL CARE

MINDFULNESS MEDITATION WORKSHOP

THIS PRACTICE DEEPENS OUR CONNECTION TO THE RICHNESS OF THE PRESENT MOMENT AND DEVELOPS CONCENTRATION, INSIGHT AND COMPASSION.

COMPLEMENTARY HEALTH- JOCELYNE LEYTON, RPP, OFFERS TREATMENTS IN CRANIAL OSTEOPATHY.

OSTEOPATHY TREATS THE WHOLE PERSON NOT JUST THE AREAS OF THE BODY CAUSING SYMPTOMS. IT ENABLES THE BODY TO HEAL ITSELF BY RELEASING THE PAINFUL HOLDING PATTERNS AND IMPROVING CIRCULATION. THIS GENTLE MANUAL THERAPY WILL IMPROVE YOUR HEALTH. FOR AN APPOINTMENT TELEPHONE (613) 384-6488, 9060C FRONT ROAD.

CUTS IN MOTION

PROFESSIONAL HAIR CARE IN YOUR HOME OFFERING CUTS, PERMS AND COLOURS. OVER 20 YEARS EXPERIENCE. CALL KIM AT 613-386-7821. (ISLAND REFERENCES AVAILABLE.)

~ CLASSIFIEDS ~

HOME SERVICES

G L M CONSTRUCTION

ISLAND OWNED AND OPERATED. COMPLETE SERVICES, ALL TRADES, ANY SIZE JOB FROM DESIGN TO CONSTRUCTION TO FINISHING. WE HAVE THE CONNECTIONS TO GET YOUR JOB DONE. REFERENCES.

GARY McDONALD: 384-1456.

THOMAS A. RICHMOND

CERTIFIED ELECTRICIAN

HOME, FARM & COMMERCIAL WIRING & REPAIRS, RIGHT HERE ON THE ISLAND. ELECTRICAL SAFETY AUTHORITY AUTHORIZED CONTRACTOR PROGRAM. 634-1855.

PAUL CLOUTIER CARPENTRY

BUILT GARRY & SUSAN FILSON'S HOUSE ON THE ISLAND IN 2004 AND HAVE BEEN WORKING ON THE ISLAND EVER SINCE. FROM COMPLETE HOME CONSTRUCTION, RENOVATIONS, FINE CARPENTRY AND WOODWORKING TO ROOFING AND DECK CONSTRUCTION.

ISLAND REFERENCES AVAILABLE.

CELL: (613) 530-5245

PAINTING AND DECORATING

YOU'VE SEEN IT ON TELEVISION. YOU HAVE THE ROOM. YOU HAVE THE BUDGET.

NOW, WHERE DO YOU FIND THE DECORATOR?

SEE SHELL

GREAT IDEAS, LOTS OF HANDS-ON EXPERIENCE, AND NONE OF THE EGO PROBLEMS OF THOSE TV FOLKS.

ISLAND REFERENCES.

PHONE 378-2736

PUBLISHING

PROSE RED PUBLISHING

PROSE RED BOOKS AND "THE LIFE STORY GAME" ARE AVAILABLE ONLINE AT "WWW.PROSERED.COM" OR VICTORIA HALL IN STELLA OR PROSE RED AT 444 MAIN ST. NEWBURGH WED-SUN 10-4

HOME SERVICES

HANDYMAN

NEED THOSE SMALL REPAIRS DONE? TREES TRIMMED/REMOVED?

ROOF REPAIRED OR REDONE IN EITHER SHINGLES OR METAL?

TRASH/DEBRIS REMOVED? WOOD CUT/ SPLIT/RESTACKED?

ESTIMATES GIVEN - EITHER HOURLY RATES OR BY THE JOB.

CALL AND BOOK NOW - 389-1579 AND ASK FOR DALE

FOR HOUSEWORK:

CALL CONNIE AT 634-3075.

WATER WELLS & WATER TREATMENT

JOHN JEFFERY

PHONE 561-7867.

TURVY GENERAL CONTRACTING

A VARIETY OF SERVICES INCLUDING:

- YARD WORK
- BRUSH CUTTING/CLEARING, REMOVAL
- BASIC HOME REPAIRS
- STONEMWORK
- MANY MORE

CALL (613) 384-0184.

REASONABLE RATES.

JACOB & KYLE MURRAY



BABYSITTERS

AVAILABLE BEGINNING SEPTEMBER

RELIABLE ADULT CAREGIVER FOR CHILDREN OF ALL AGES

DURING THE DAY, BEFORE AND/OR AFTER SCHOOL

REASONABLE RATES.

CALL ROXANNE @ 613-389-4630

-AFTER SCHOOL AND WEEKENDS.

-RESPONSIBLE & RED CROSS CERTIFIED

-CALL TALIA FLEMING 389-9869

RED CROSS BABYSITTING & CPR

CERTIFIED - AVAILABLE AFTER SCHOOL, EARLY EVENINGS & WEEKENDS.

BETH ALBERTAN: 389-2662

BABYSITTERS

RED CROSS CERTIFIED BABYSITTER.

AVAILABLE EARLY EVENINGS & WEEKENDS.

TORRI PHILLIPS: 389-0512

FARM PRODUCTS

GODDEN'S WHOLE HOG SAUSAGE

AVAILABLE IN FOUR DISTINCT FLAVOURS - SALT & PEPPER; HONEY GARLIC; TOMATO OREGANO; HOT ITALIAN.

NEW! BREAKFAST SAUSAGES - SALT & PEPPER OR MAPLE FLAVOUR! OUR FROZEN SAUSAGES ARE AVAILABLE IN 5 AND 10 LB. BOXES AT POPLAR DELL B&B, 389-2012.

HOME GROWN BEEF

GOVERNMENT INSPECTED

AVAILABLE IN APPROXIMATELY 25 OR 50LB FREEZER PACKAGES. \$4.99/LB INCLUDING: ROASTS, STEAKS, STEW, HAMBURG, & PATTIES. INDIVIDUAL VACUUM-PACKED PIECES.

CALL FLEMINGISLE FARMS 389-9869.

TOPSY FARMS' WOOL SHED

NEW THIS YEAR:

SHEEPSKIN MITTS AND SLIPPERS MAKE WONDERFUL CHRISTMAS GIFTS. WE HAVE A GOOD INVENTORY OF WOOL/COTTON MATTRESS PADS AND DUVETS AND PILLOWS, AS WELL AS OUR GREAT BLANKETS, WRAPS AND LAP ROBES, AND SHEEP AND LAMB SKINS.

A PLEASANT OUTING TO ENTERTAIN GUESTS.

PLEASE PHONE US BEFORE YOU COME TO MAKE SURE WE ARE AROUND. 389-3444.



GHOST OWL



PHOTO BY BRIAN LITTLE

THE OWL WHO LEFT THIS PRINT ON A WINDOW AT THE LODGE LIKELY HAD QUITE A HEADACHE.

** NO OWLS WERE HARMED IN THE TAKING OF THIS PHOTO—THE ONE THAT MADE THIS PRINT FLEW AWAY*

*** Note from Sue: I heightened the contrast in this photo to make the image of the owl easier to see in black and white. Unfortunately, in doing that, it also highlighted some of the reflections and specks on the glass.*

The



Foot